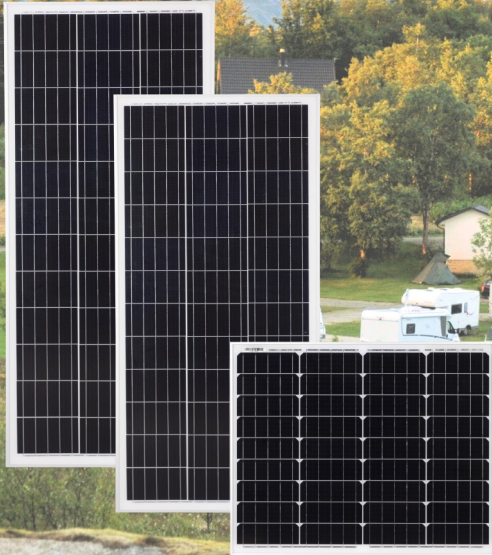




# PowerXtreme



## PowerXtreme Solar series



**Optimal efficiency and charging yield (MPPT)**

Suitable for LiFePO4, lead acid and AGM



**More freedom and independence**

Easy to operate via app or display



**Safe**

The solar panels are IEC, TÜV and ISO approved



**Easy installation through complete packages**

Cables, mounting material, transit and spoilers



Cable gland roof 2-way  
EMO10067

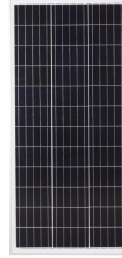
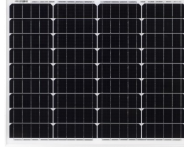


Spoiler set 550 mm  
EMO10072





# PowerXtreme



Model	XS 45 W	XS 115 W	XS 140 W
Article number	EM010092	EP5200021	EP5200022
Maximum power	45 Wp	115 Wp	140 Wp
Optimum operating voltage	18.1 V DC	18.1 V DC	18.1 V DC
Optimal usage current	5.52 A	5.52 A	5.52 A
Open circuit voltage	22.1 V DC	22.1 V DC	22.1 V DC
Type solar panel	Mono	Mono	Mono
Dimensions (in mm)	670x540x30	1200x540x30	1480x540x30
Temperature range	-40 °C to 85 °C	-40 °C to 85 °C	-40 °C to 85 °C
Weight	4 kg	8 kg	9.6 kg
Warranty	10 years	10 years	10 years



Model	XS 20s	Display	Bluetooth-module
Article number	EP5100002	EP2500002	EP2500001
Suitable for	12V / 24V		
Voltage range battery	9 V to 32 V DC		
Maximum voltage input range	100 V DC		
Nominal charging current	20 A		
MPPT tracking efficiency	99%		
Wireless range			≤ 15 m
Self-consumption	< 10 mA		
Operating temperature	-35 °C to 60 °C	-35 °C to 65 °C	-20 °C to 75 °C
Dimensions (in mm)	150x105.6x61,5	104.5x55.5x11.8	67.3 x 36 x 15.5
Degree of protection	IP32	IP62	IP67
Warranty	5 years	5 years	5 years

Package	Article number	XS 115 W	XS 140 W	XS 20s	Bluetooth module	Display
XS 20s, 115W & display	EP5200023	1		1		1
XS 20s, 140W & display	EP5200024		1	1		1
XS 20s, 230W & display	EP5200025	2		1		1
XS 20s, 280W & display	EP5200026		2	1		1
XS 20s, 115W & Bluetooth	EP5200027	1		1	1	
XS 20s, 140W & Bluetooth	EP5200028		1	1	1	
XS 20s, 230W & Bluetooth	EP5200029	2		1	1	
XS 20s, 280W & Bluetooth	EP5200030		2	1	1	
XS 20s & display	EP5100003			1		1
XS 20s & Bluetooth	EP5100004			1	1	